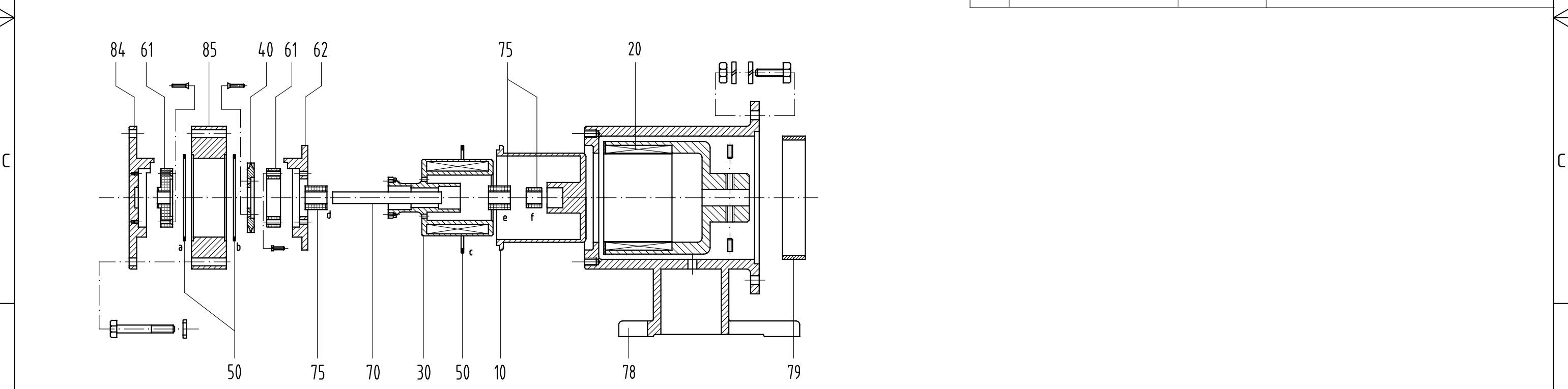


REF	DESCRIPTION	MATERIAL	CODE
10	Containment shell	SS 316L	
20	Ext. Magnet	CoSm/ Carbon Steel	
30	Int. Magnet	SS 316L/CoSm	
40	Impeller	SS 316L	
50	Set O-Rings (a+b+c) a + b = O-Ring 4337 (237) c = O-Ring 4400 (242)	Viton	
61	Thrust Bearings	Pcarbon	
62	Rear Ring	SS316L	
70	Shaft	SIC	
75	Sleeve Bearings Bearings (d+e) Bearing (f)	SIC SS316	
78	Bracket (200-130-24)	Cast Iron	
79	Rub Ring	Bronze	
84	End Cover	SS 316L	
85	Pump Casing	SS 316L	
88	Rear Wet End (10+30+40+50+61+62+70+75)	/	

(x x) DIFFERENT FROM MOTOR MANUFACTURER  
- DIRECTION AND PORTS LOCATION ARE REVERSIBLE

THREAD UNI ISO 228/1



	<b>MARCH PUMPEN GmbH &amp; Co.KG</b> Rathenastraße 2 D-35394 Gießen  <a href="http://www.march-pumpen.com">www.march-pumpen.com</a> <a href="mailto:info@march-pumpen.com">info@march-pumpen.com</a>	Baureihe / Series: <b>MTA</b>
		Typ / Type: <b>MTA 49 SSR</b>
		Motor: <b>IEC 90 B5</b>